

# Il JRC e gli EDIC

Riunione rete italiana EDIC

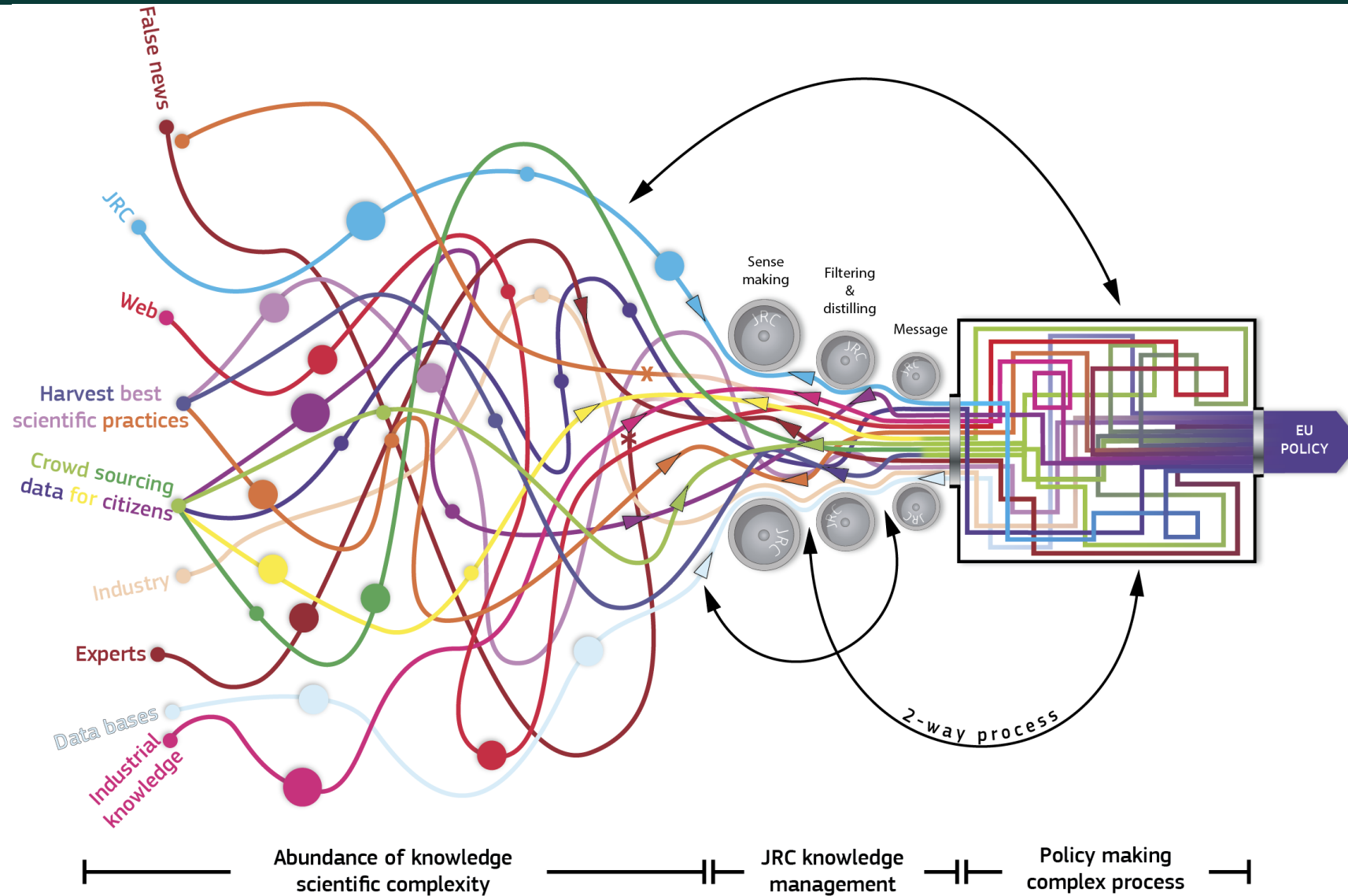
Trento, 13 marzo 2019

Matteo Fornara

Unità Relazioni Internazionali e Istituzionali



# ...gestire il diluvio....



# La mission del JRC

”

*Il compito del JRC, nel suo ruolo di servizio scientifico e di conoscenza della Commissione europea, è quello di supportare le politiche dell'UE con una base di evidenza, in modo indipendente, durante tutto il ciclo politico*

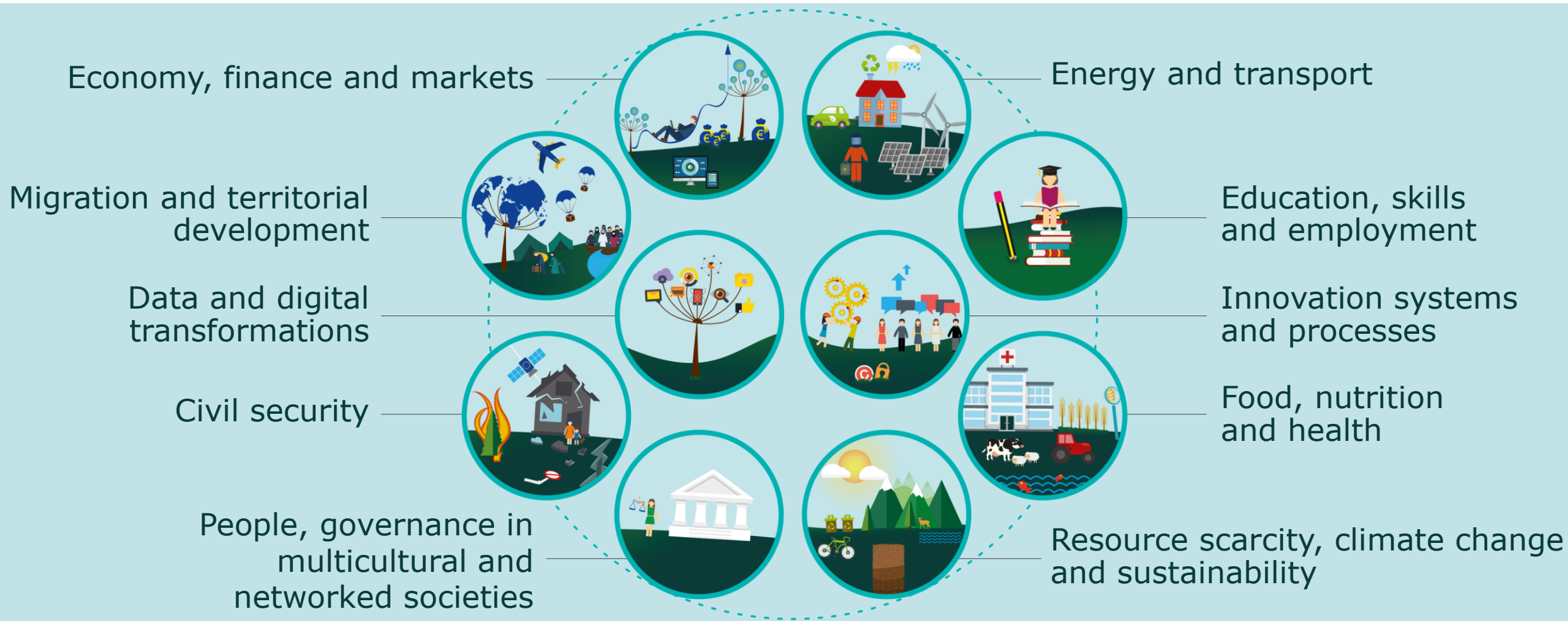
”



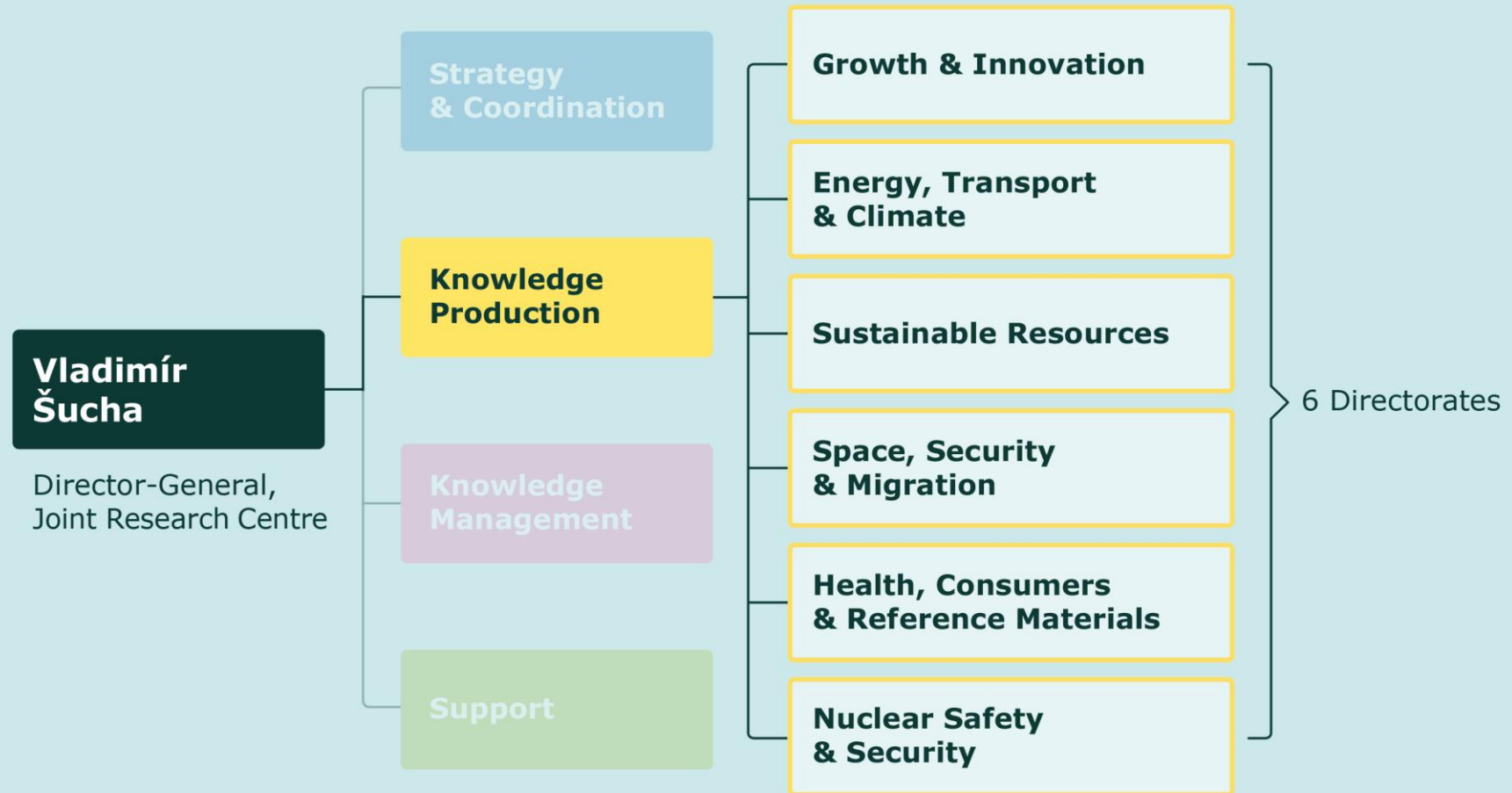
J ■ ■ ■ ■ ...un ponte tra...



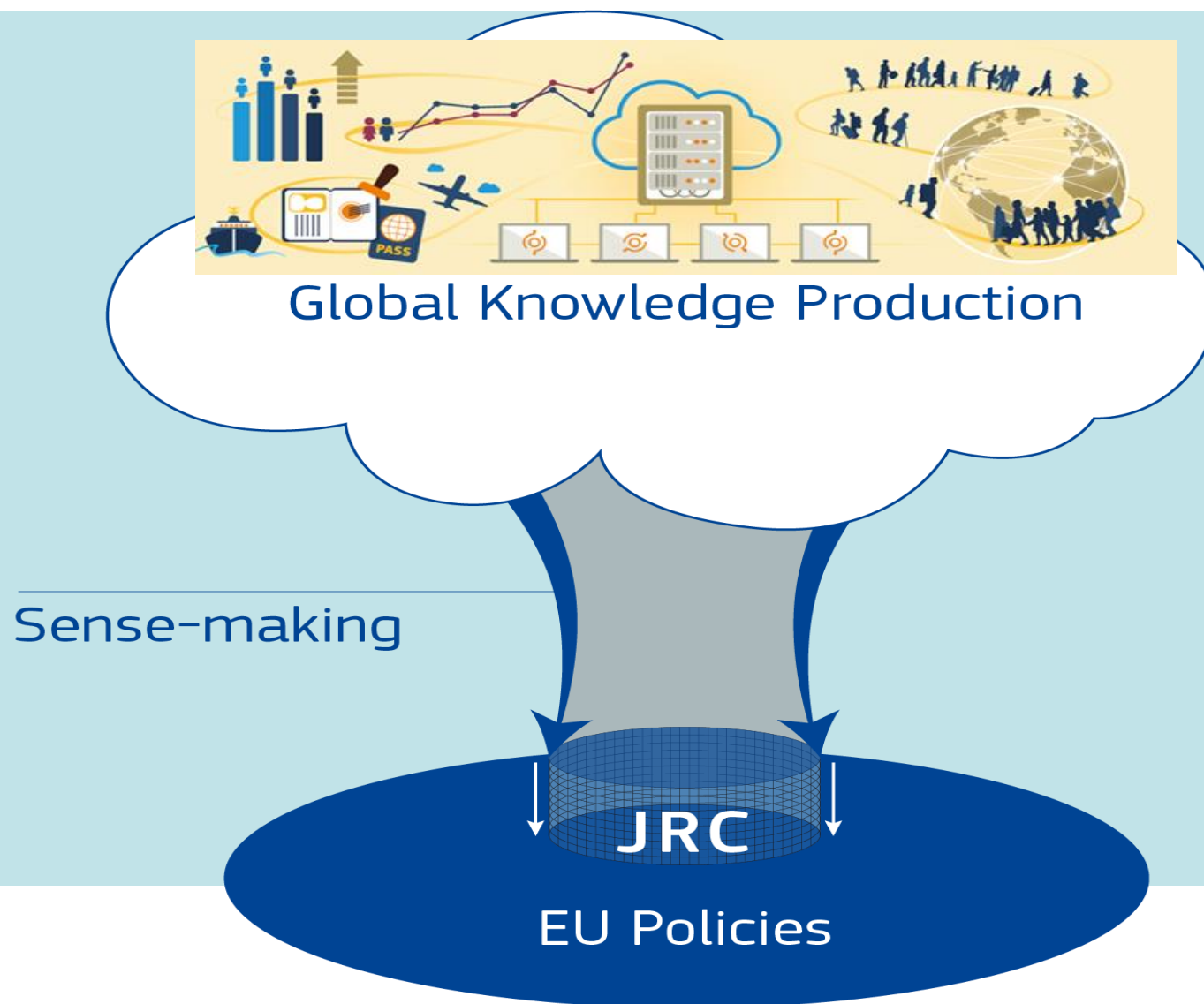
# JRC - 10 Priority Nexus



# La produzione scientifica



# JRC Knowledge Centres



# Knowledge Centres



Disaster Risk Management Knowledge Centre



Knowledge Centre on Migration and Demography



Knowledge Centre for Territorial Policies



Knowledge Centre for Bioeconomy



Knowledge Centre for Food Fraud and Quality



Knowledge Centre for Food and Nutrition Security





# Knowledge Centre on Migration and Demography

The screenshot shows the website for the Knowledge Centre on Migration and Demography (KCMD) Data Catalogue. At the top, it features the European Commission logo and the text "EUROPEAN COMMISSION Migration and Demography Data Catalogue". Below this is a navigation menu with "Home", "Datasets", "Publishers", "Domains", and "About". The main content area has a yellow background and includes a "Welcome to KCMD Data Catalogue" section with a brief description of the catalogue's purpose. To the right of this text is a large, colorful illustration depicting migration and data analysis, with icons for people, a globe, a bar chart, a line graph, a passport, and a server. Below the welcome text is a search bar containing the text "E.g. environment". At the bottom of the page is a grid of 12 topic categories, each with a small icon and a text label.

EUROPEAN COMMISSION  
Migration and Demography Data Catalogue

European Commission > EU Science Hub > Knowledge Centre on Migration and Demography > Data Catalogue

Home Datasets Publishers Domains About

## Welcome to KCMD Data Catalogue

The Knowledge Centre on Migration and Demography (KCMD) Data Catalogue is a table of data sources relevant to Migration and Demography policies. Each data source is listed with its summary description, the link to its web site and other metadata. The catalogue will include official EU and international statistics, as well as important data sets at Member State level.

E.g. environment

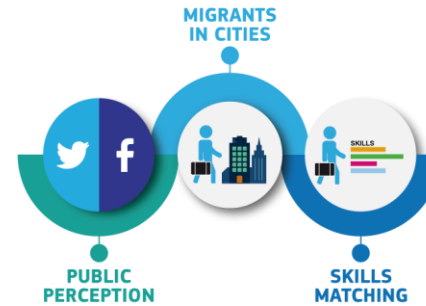
|   |   |   |  |
|---|---|---|--|
|  Legal migration and integration |  External dimension    |  Children in migration |  Migrant smuggling        |
|  Irregular migration             |  Internal displacement |  Asylum and refugees   |  Demography and migration |
|  Internal EU mobility            |  Global human mobility |  Public sentiment      |  Migration governance     |

# Knowledge Centre on Migration and Demography

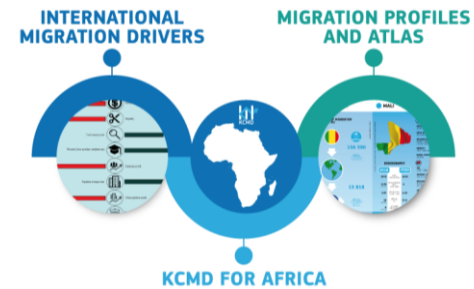


**KNOWLEDGE CENTRE  
ON MIGRATION  
AND DEMOGRAPHY**

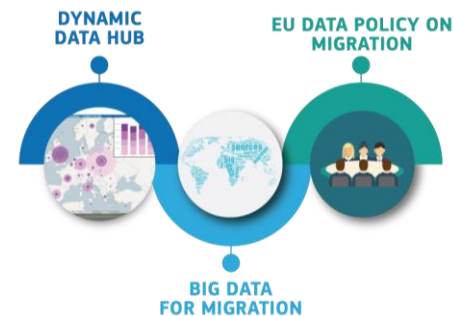
## INTERNAL DIMENSION

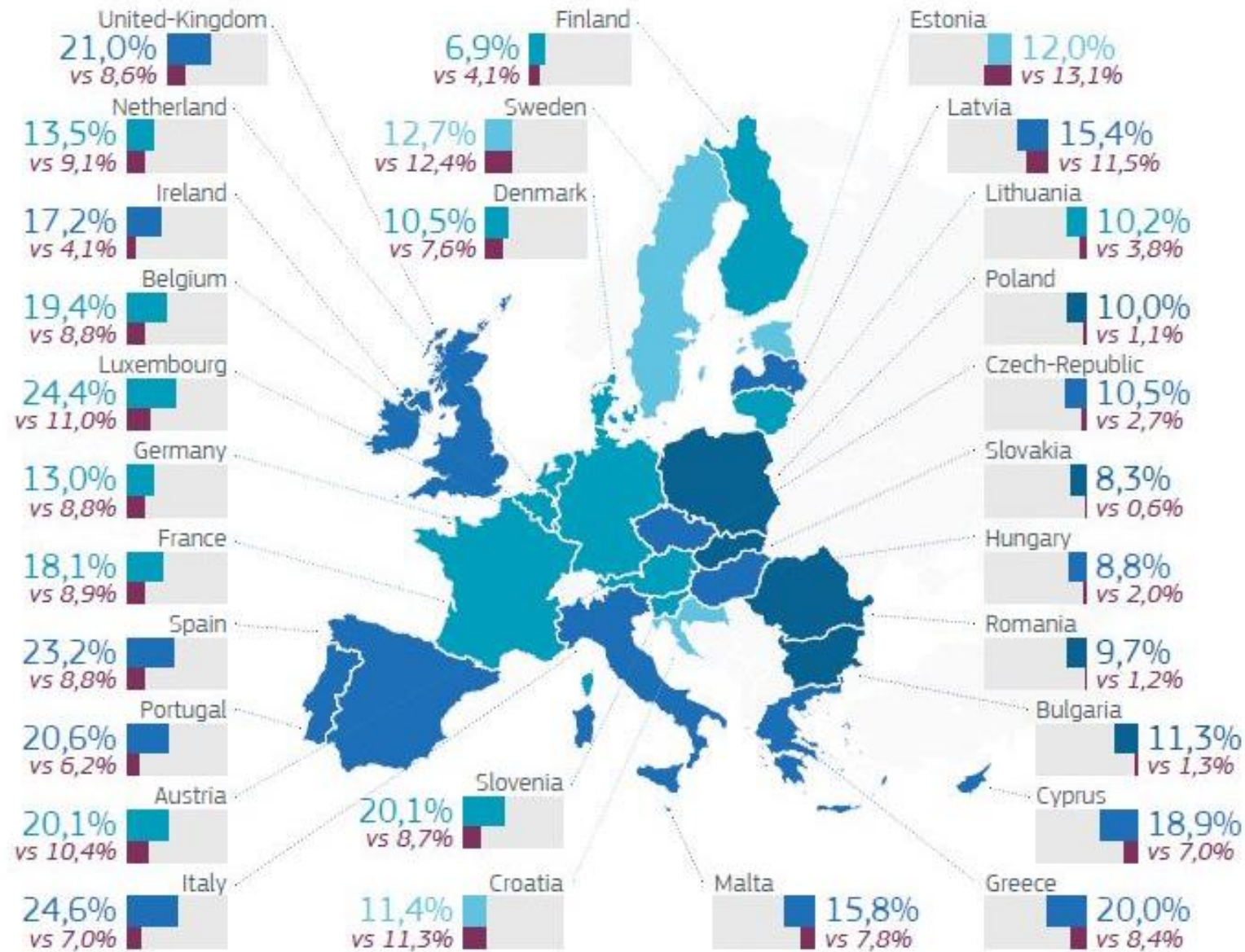


## EXTERNAL DIMENSION



## DATA FOR MIGRATION



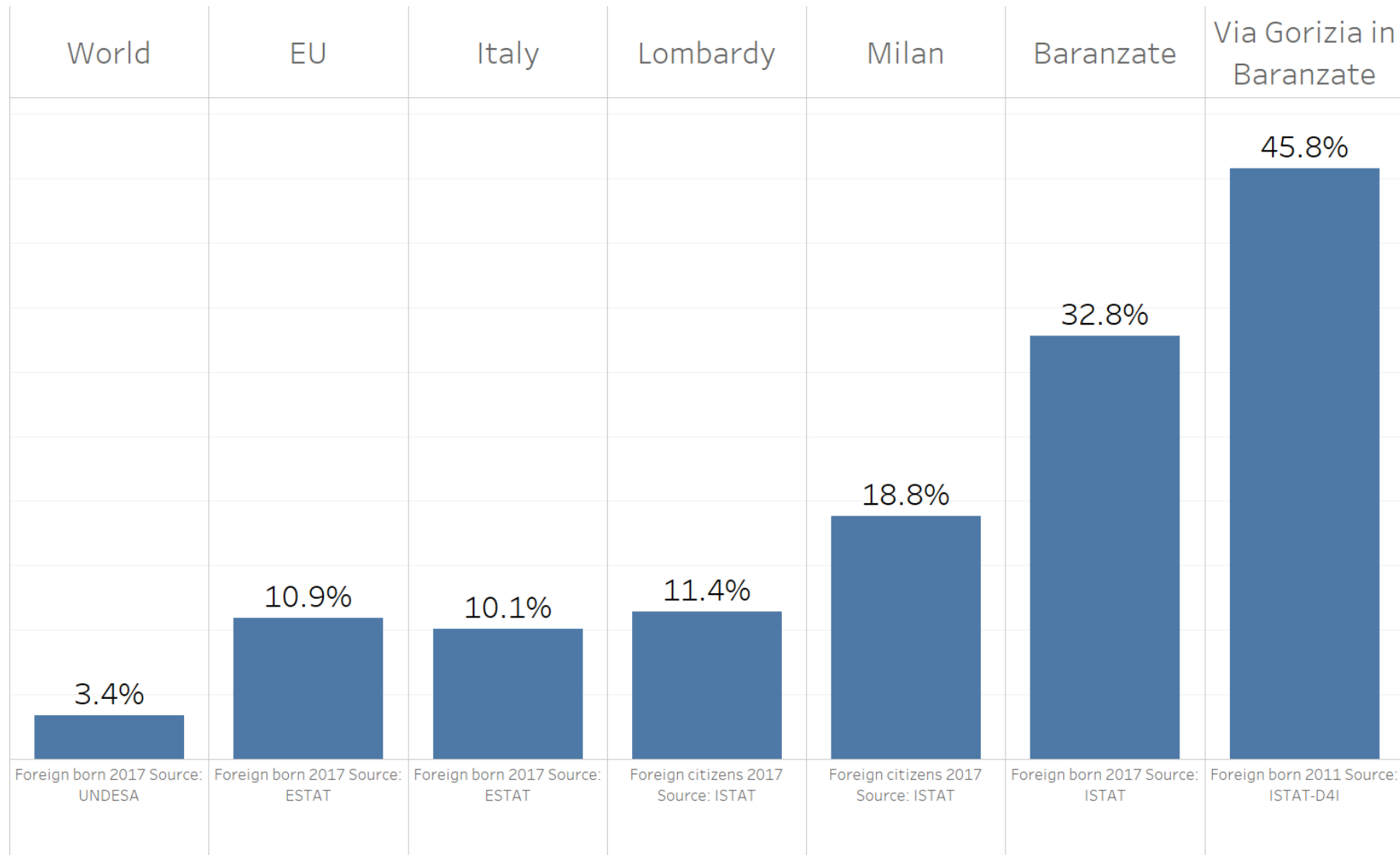


■ Average estimated proportion of immigrants in the total population in their country  
 The darker the blue, the higher the ratio between the estimated and real proportion

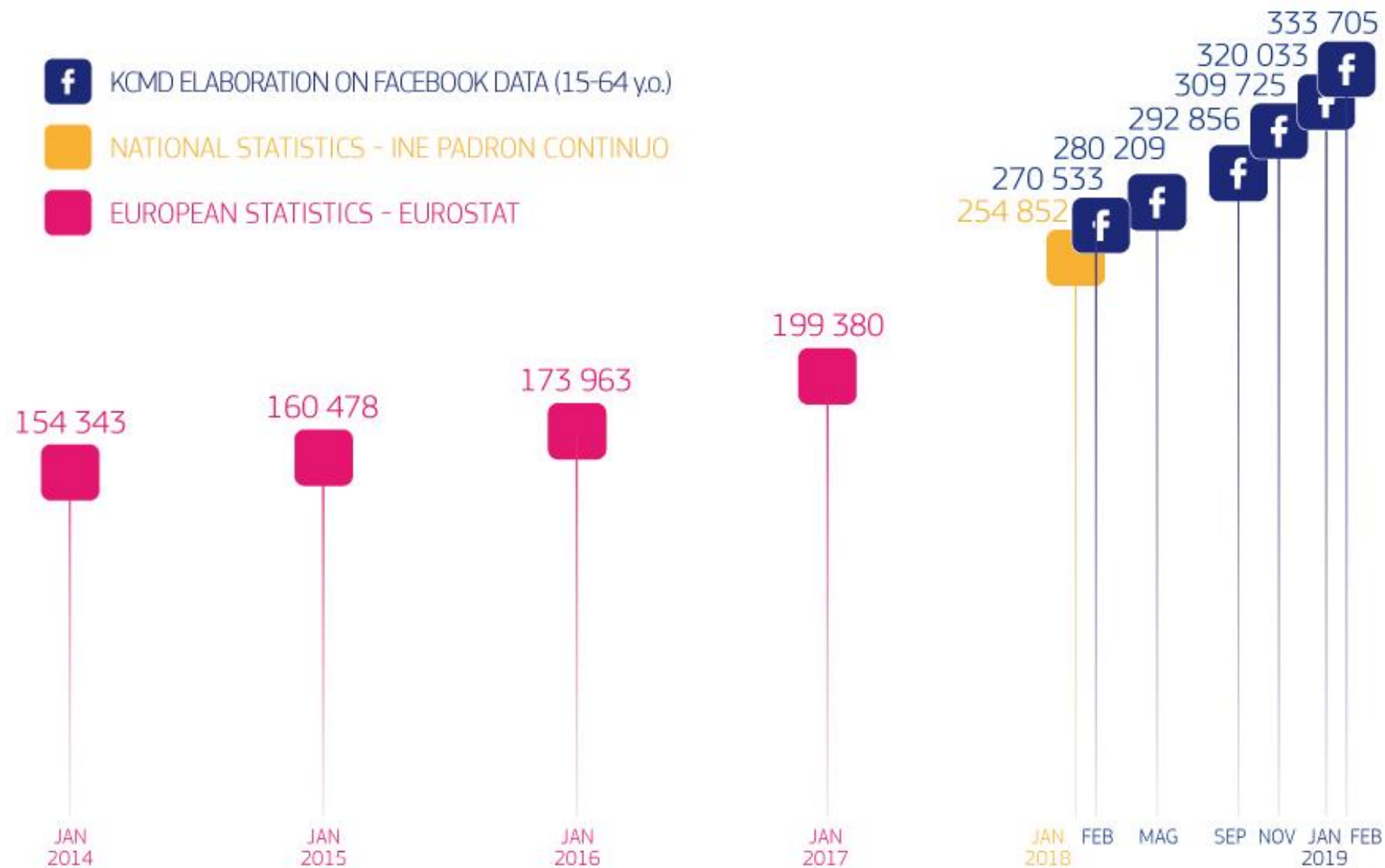
■ Eurostat official data







# UNDESA, ESTAT, OECD

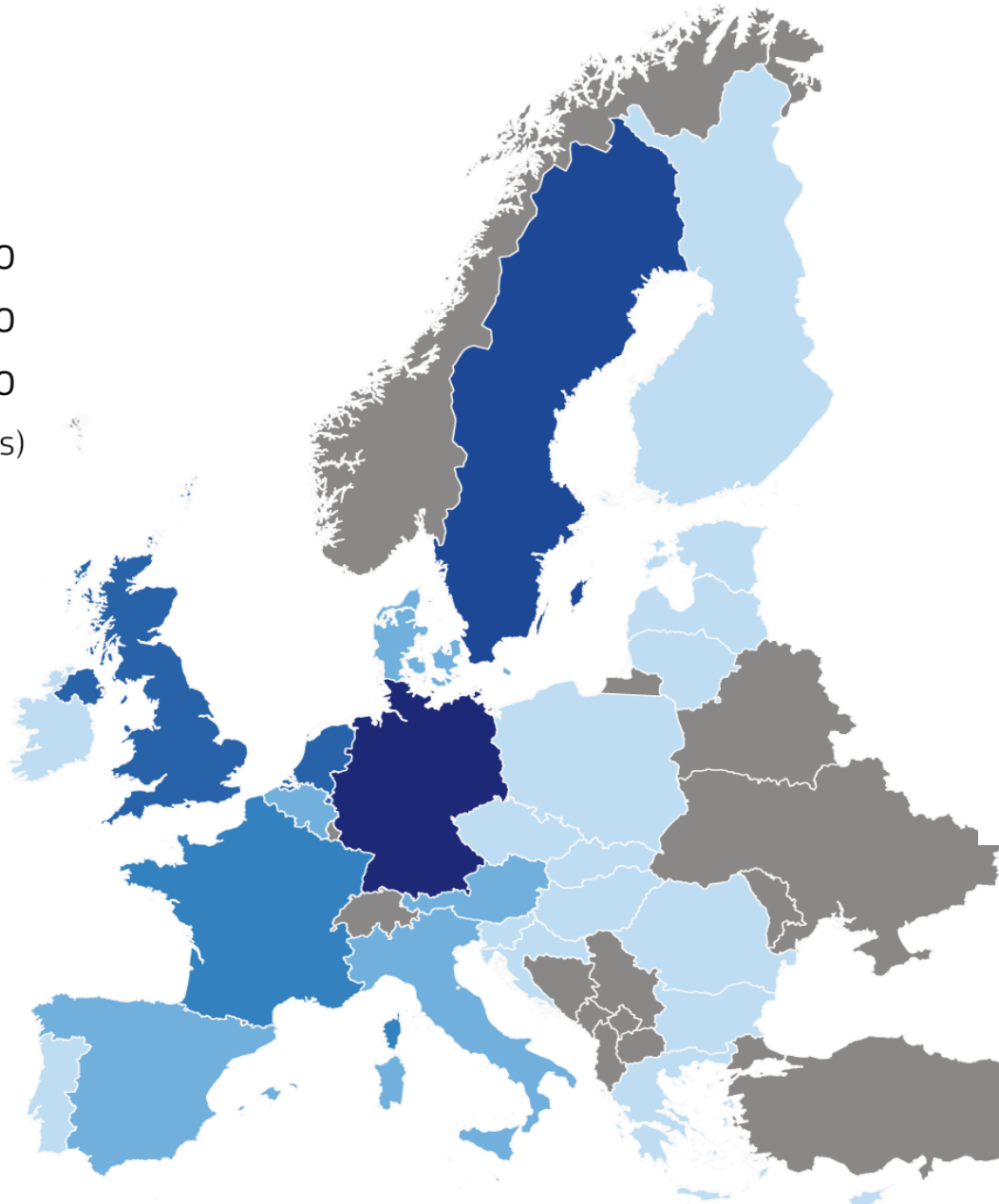
# National statistics, administrative data



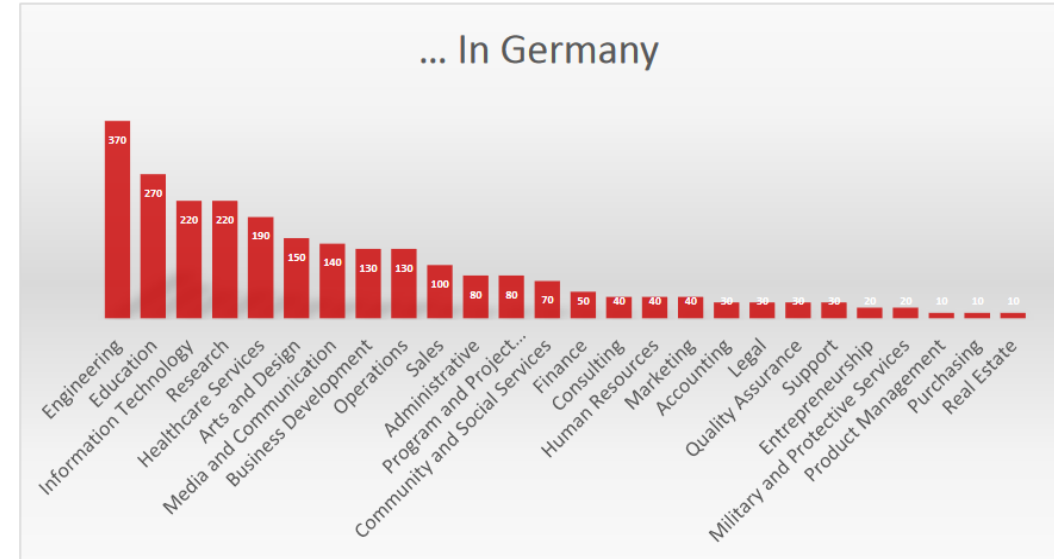
# VENEZUELANI IN SPAGNA

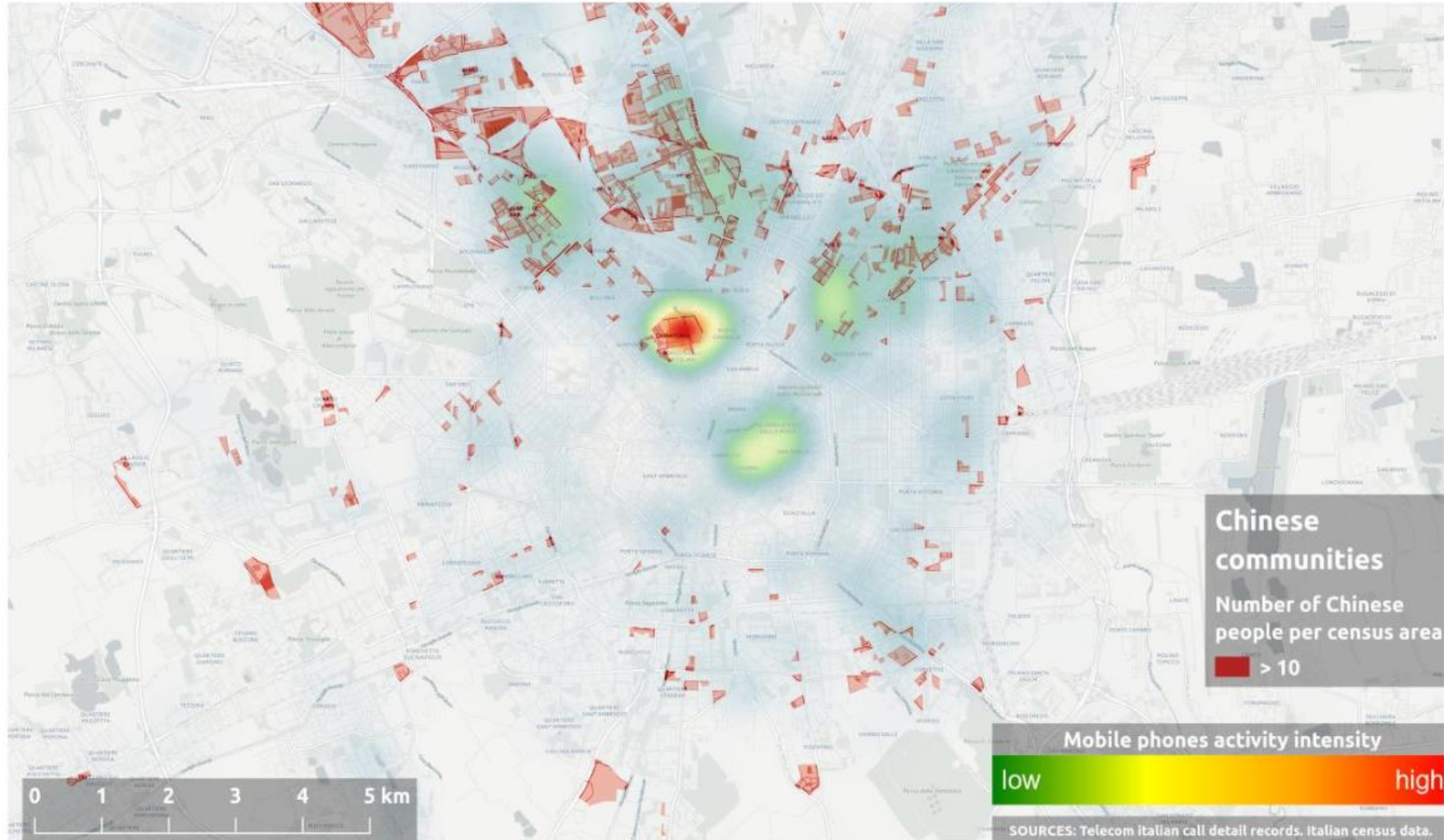


-  < 200
  -  200 - 500
  -  500 - 1000
  -  1000 - 2000
  -  2000 - 3000
  -  3000 - 4000
- (Absolute numbers)



## UTENTI LINKEDIN CHE HANNO STUDIATO IN SIRIA





## Density of mobile phone traffic with China and areas of highest concentration of migrants from 2011 Census

Sources:

- Italian Census Data &
- Call Detail Records, Telecom Italia

# I siti del JRC

La sede centrale è a Bruxelles

I siti scientifici si trovano in

5 Paesi membri:

- Belgio (Geel)
- Germania (Karlsruhe)
- Olanda (Petten)
- Spagna (Siviglia)
- ... e **Italia, Ispra**





# Il sito JRC a Ispra



- Circa 2/3 dello staff
- Oltre 40 grandi infrastrutture scientifiche
- Quasi 200 ettari di superficie... 36 km di strade interne..
- Anni Cinquanta: Sito di ricerca nucleare italiano
- 1957: Trattati di Roma (Euratom)=> nei decenni... JRC
- Programma di *nuclear decommissioning* in corso

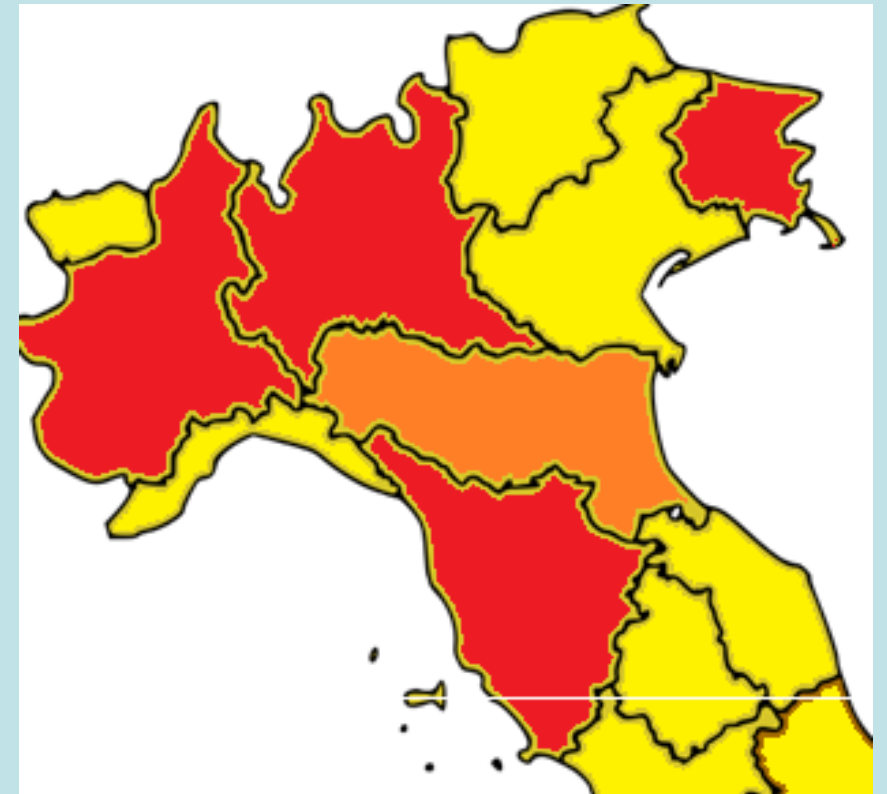
# 42 strutture di ricerca di grandi dimensioni 110 banche dati online



1. Hydrogen Testing Facility, 2. European Laboratory for Structural Assessment (ELSA), 3. European Interoperability Centre for Electric Vehicles and Smart Grids, 4. Food Contact Materials (EURL FCM), 5. European Crisis Management Laboratory (ECML), 6. European Microwave Signature Laboratory (EMSL), 7. Vehicle Emission Laboratory (VELA), 8. European Solar Test Installation (ESTI), 9. Nanobiotechnology Laboratory, 10. Hot Cell Laboratory, 11. Reference materials processing facility, 12. AMALIA Laboratory

# Memorandum of Understanding in essere con le regioni italiane

- Lombardia (2017)
- Friuli Venezia Giulia (2017)
- Toscana (2018)
- Piemonte (2019)
- *UNIBO/ Emilia Romagna*



# Apertura delle strutture di ricerca del JRC

Il JRC ospita 41 strutture di ricerca che potenzialmente possono essere aperte ad utilizzatori esterni



# Apertura delle strutture di ricerca del JRC

**GELINA**, Neutron time-of-flight facility for high-resolution neutron measurements [Open](#)

**DEC 7 2017** **MAR 7 2018** **Geel, Belgium.** GELINA is a 150 MeV electron accelerator serving as strong white neutron source for high resolution neutron time-of-flight measurements.

[Details of the call #2017-1-RD-EUFRAT-GELINA](#)



**HADES**, Underground laboratory for ultra-low level gamma-ray spectrometry [Open](#)

**DEC 7 2017** **MAR 7 2018** **Geel, Belgium.** JRC operates a laboratory for ultralow-level radioactivity measurements inside the 225 m deep underground laboratory HADES, which is located at the premises of the Belgian Nuclear Research Centre. In HADES, the muon flux (secondary cosmic rays) is a factor of 5000 lower compared to above ground and the flux of protons, neutrons and electrons is reduced to an insignificant level.

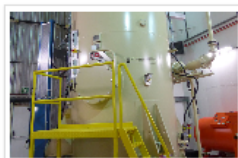
[Details of the call #2017-1-RD-EUFRAT-HADES](#)



**MONNET**, Tandem accelerator based fast neutron source [Open](#)

**DEC 7 2017** **MAR 7 2018** **Geel, Belgium.** MONNET is a high-intensity quasi mono-energetic fast neutron source, driven by a vertical 3.5 MV Tandem accelerator producing either continuous or pulsed beams of protons, deuterons or helium ions.

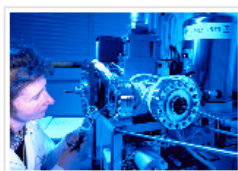
[Details of the call #2017-1-RD-EUFRAT-MONNET](#)



**RADMET**, Radionuclide Metrology laboratories [Open](#)

**DEC 7 2017** **MAR 7 2018** **Geel, Belgium.** The Radionuclide Metrology laboratories (RADMET) are equipped with a broad set of instruments used for nuclear decay measurements, determination of related nuclear data and radiological characterisation of samples and materials.

[Details of the call #2017-1-RD-EUFRAT-RADMET](#)



Non-nuclear calls

**Reaction Wall**, European Laboratory for Structural Assessment (ELSA) [Open \(extended\)](#)

**SEP 18 2017** **JAN 31 2018** **Ispra, Italy.** The central feature of the European Laboratory for Structural Assessment (ELSA) is the Reaction Wall. It consists of a reinforced concrete vertical wall and a horizontal floor rigidly connected together to test the vulnerability of buildings to earthquakes and other hazards.

[Details of the call #2017-1-RD-ELSA-ReactionWall](#)



- **Beneficiari principali: università, istituti di ricerca e PMI**
- **Bandi pubblicati sul nostro sito:**  
<https://ec.europa.eu/jrc/en/research-facility/open-access>
- **Processo di valutazione peer-review da un comitato di esperti**
- **Selezione basata su implementazione, collaborazione, accesso a nuovi utenti, area di ricerca ed importanza per l'Europa in termini di standardizzazione, integrazione, coesione, sviluppo sostenibile e competitività**

# Collaborative Doctoral Partnership

- Nuovo progetto per la collaborazione strategica tra JRC e le Università e le istituzioni di ricerca sui dottorati (PhD).
- Aperto alle Higher Education Institutions nei Paesi UE e associati al programma HORIZON 2020.
- Primo bando, 2017-18: 134 candidature approvate (di cui 37 dall'Italia) in 6 aree tematiche (energy/transport; suolo; bioeconomia e foreste; machine learning; genomics; nuclear decommissioning)



# JRC Science and Art

Progetto lanciato nel 2015

3 elementi: scienza – arte – società

Esibizioni:

- Resonances I – 2015: Food
- Resonances II – 2017: Fairness
- Resonances III – 2019: Datami

Milano (MUST), Berlino, Parigi, Bruxelles



# Art & science Resonance Festival (I & II)





# Collaborazione con istituti e musei scientifici



**ARTIFACTS**

# Diffusione della conoscenza

## I percorsi esistenti

### *In-house*

- Visitors Centre
- Lab/Facilities
- Hosting events (TEDx, Press)
- Open days (cittadini/scuole)
- Social Media

### *On the road*

- Partecipazione ad eventi (ESOF, ERN etc)
- Objects (e.g. colossal colon)
- Full stand-alone exhibitions
- Collaborazione con i musei
- Art & science



# il Centro Visitatori del JRC a Ispra

- Una finestra sul mondo della scienza per la politica
- Un mezzo da esplorare in libertà grazie all'ausilio di giochi, video animati, display interattivi eccetera
- Da poco anche virtuale:  
<https://ec.europa.eu/jrc/en/about/visitors-centre>



# Il Centro Visitatori del JRC a Ispra



# Le Scuole sul sito di Ispra

- Schools Days in maggio (Scuole locali e Paesi UE)
  - 16 e 17 maggio 2019 (*chiuso*)
- European School Day in ottobre
- Teachers' Day (tbd)
- Visita mensile (da settembre 2019) con registrazione da sito JRC che comprende:
  - Presentazione JRC
  - Tour del Visitors' Centre
  - Visite "live" alle nostre infrastrutture di ricerca
  - Bus tour del JRC con guida
- Digital, competizioni tematiche, etc..



*Contatto: Rossella Speroni*

# Eventi ospitati al JRC

## TEDx@JRC

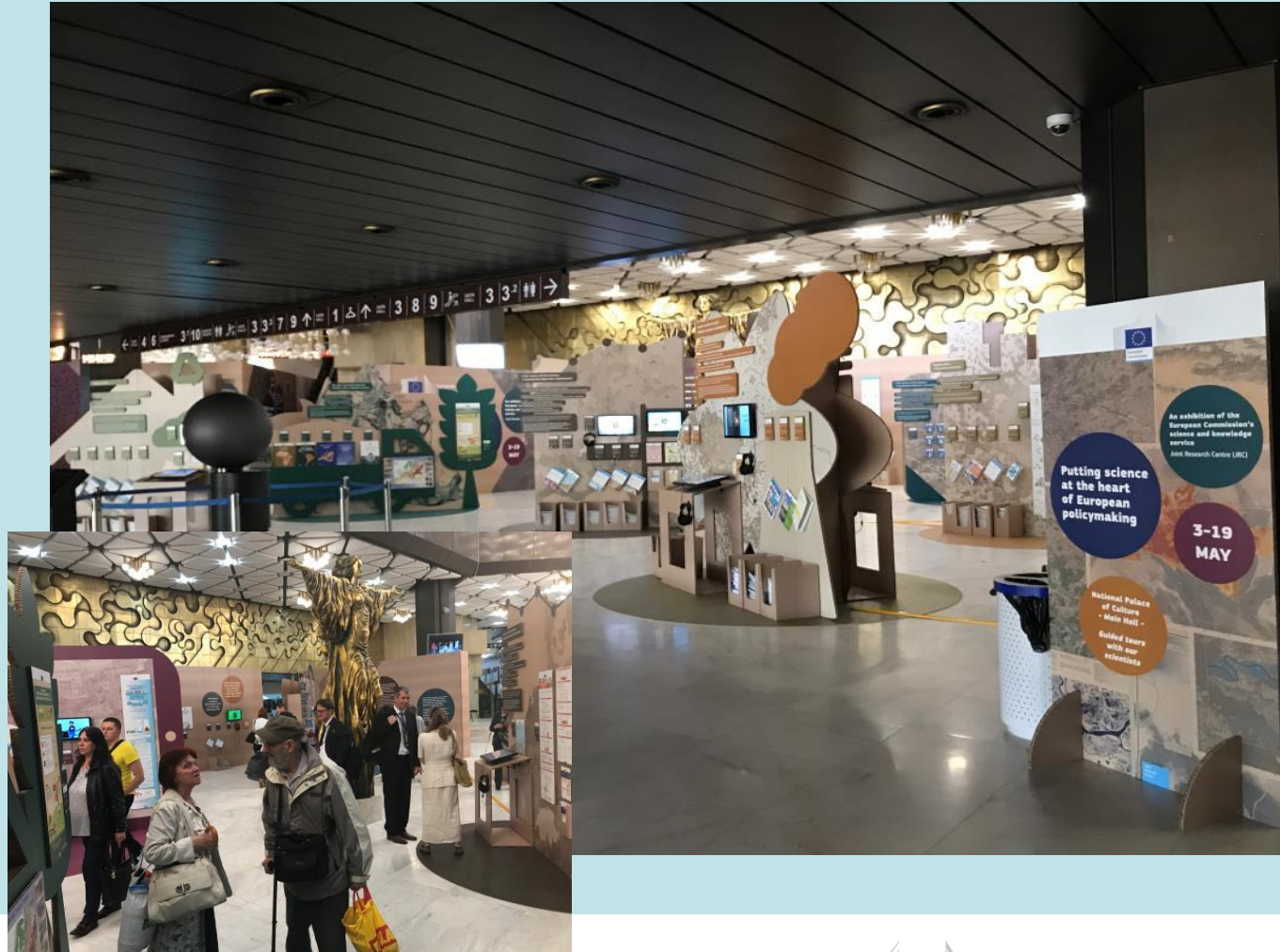
- Progetto congiunto no profit preparato da TEDx Varese, organizzato e ospitato dal JRC
- Show serale con visita ai nostri laboratori in notturna
- Evento recente: 15 febbraio 2019 (*sold out* in 48 ore)



# Story telling – stand itinerante

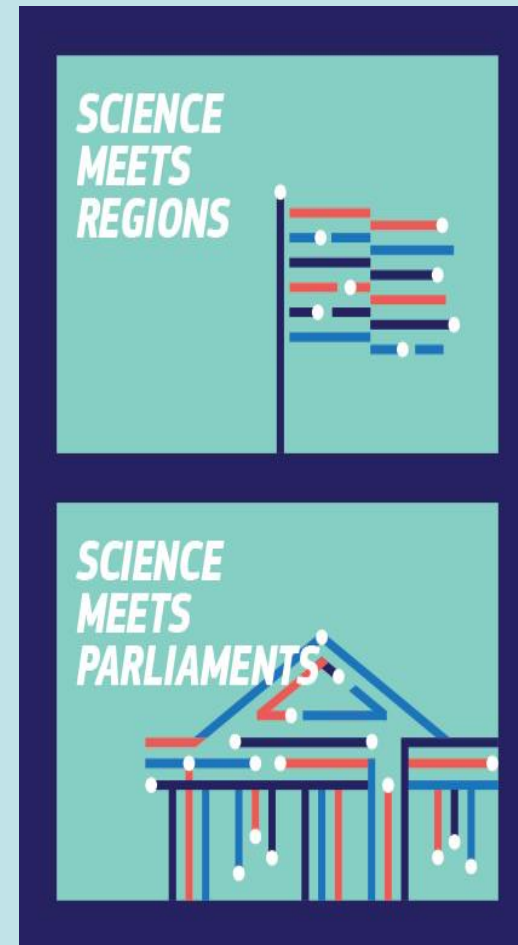
Stand itinerante (10 "isole") >400 m<sup>2</sup> in grosse manifestazioni: Bruxelles, Parlamento Europeo Strasburgo, Palazzo della Cultura di Sofia

- Per presentare il JRC a stakeholders e grande pubblico
- Per spiegare il concetto di: *"Posizionare la scienza al centro del policy making"*



# Science Meets Regions

- Incontro tra ricercatori e policymakers
- Evento di lancio: 5-6 febbraio PE Bruxelles
- 22 eventi nei Paesi Membri
- Italia: Ragusa (settore: olio d'oliva)





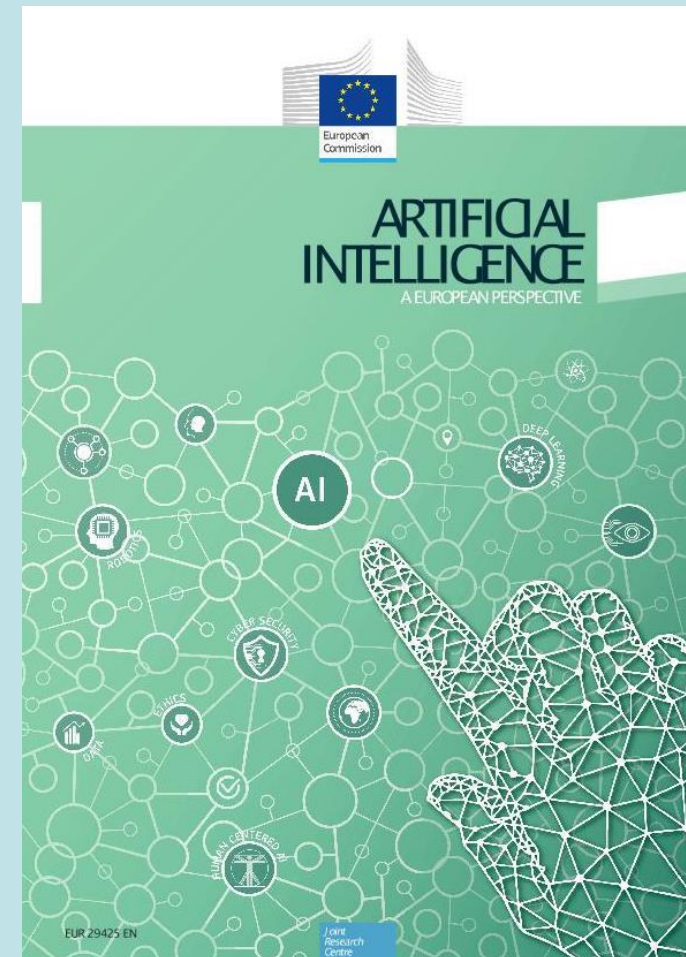
# Eventi regionali/nazionali

- European Researchers' Night (Milano, Monza, Torino, Trento, Aosta, Varese,...)
- Settimane della scienza (Milano, Genova)
- Focus Live (2019: Milano, Genova, Trento)
- Eventi 9 maggio (EC REP, EPLO)
- Science meets Regions (Italia: Ragusa)
- TEDx (Varese)
- World Water Day (Mantova)
- EFSA-EP-EDIC (Parma) #stavoltavoto.eu
- ESOF (2020: Trieste)
- .....



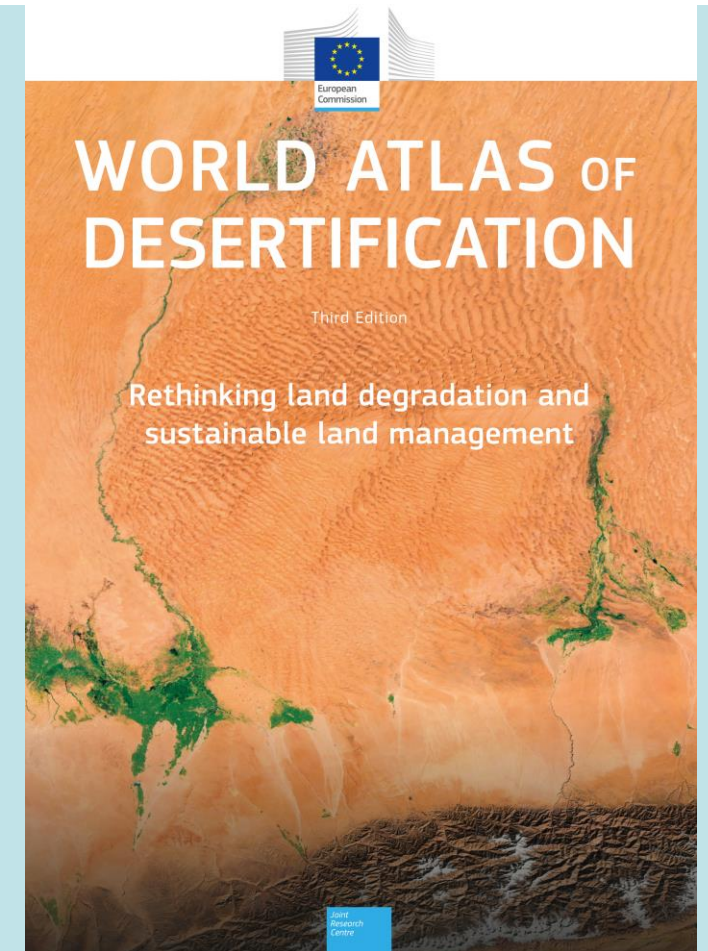
# Documentazione

- Annual Report
- Brochures per gli amministratori locali
  - JRC Services
  - Regional Handbook
- Rapporti
  - Artificial Intelligence
  - Cultural Cities Monitoring
  - Demography and Human Capital
  - UE/Africa partnership
- Materiale promozionale



# Gli Atlanti

- Biodiversità del Suolo (Europa, globale)
- Suolo per macroregioni (Artico, Sudamerica e Caraibi, Africa)
- Desertificazione
- Urban Water Atlas (dati sulle città europee tra cui Bologna, Genova, Pisa, Reggio Emilia)
- Forest Trees
- Atlas on Migration



# Proposte di collaborazione con la rete EDIC Italia

qualche idea...

- Partecipazione dei ricercatori/scienziati JRC a eventi degli EDIC (*già inclusi nel programma di lavoro*)
- Coordinamento eventi *Local Outreach*
- Visite istituzionali al JRC
- Invio documentazione
- Perchè no... una prossima riunione EDIC Italia a Ispra?
- .....



[matteo.fornara@ec.europa.eu](mailto:matteo.fornara@ec.europa.eu)  
[rossella.speroni@ec.europa.eu](mailto:rossella.speroni@ec.europa.eu)



JRC Science Hub:  
*[ec.europa.eu/jrc](http://ec.europa.eu/jrc)*



Twitter and Facebook:



*[@EU\\_ScienceHub](https://www.facebook.com/EU_ScienceHub)*



LinkedIn: *[european-commission-joint-research-centre](https://www.linkedin.com/company/european-commission-joint-research-centre)*



YouTube:

*[JRC Audiovisuals](https://www.youtube.com/JRC_Audiovisuals)*



Vimeo:

*[Science@EC](https://vimeo.com/Science@EC)*